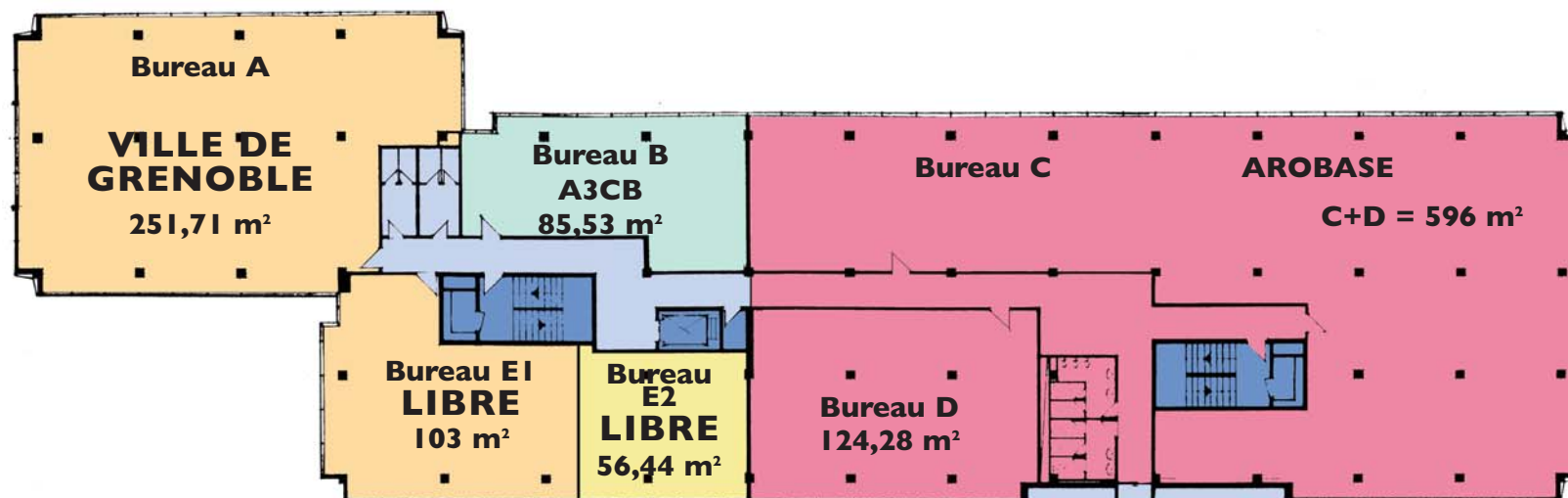
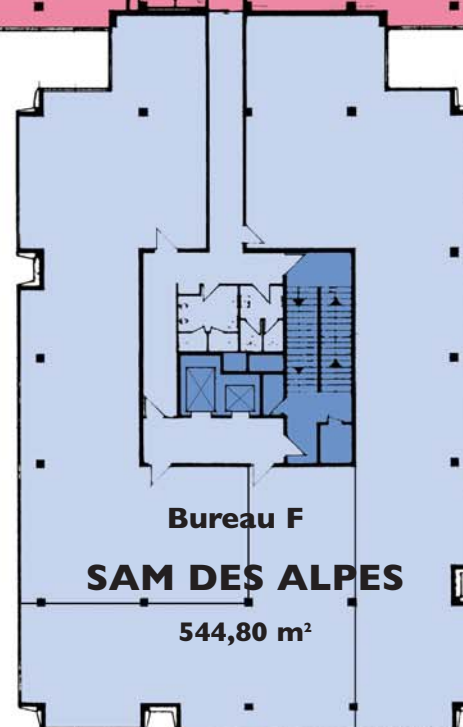


	Bureaux
Bureau A	195,00
Bureau B	100,00
Bureau C	230,00
TOTAL	525,00

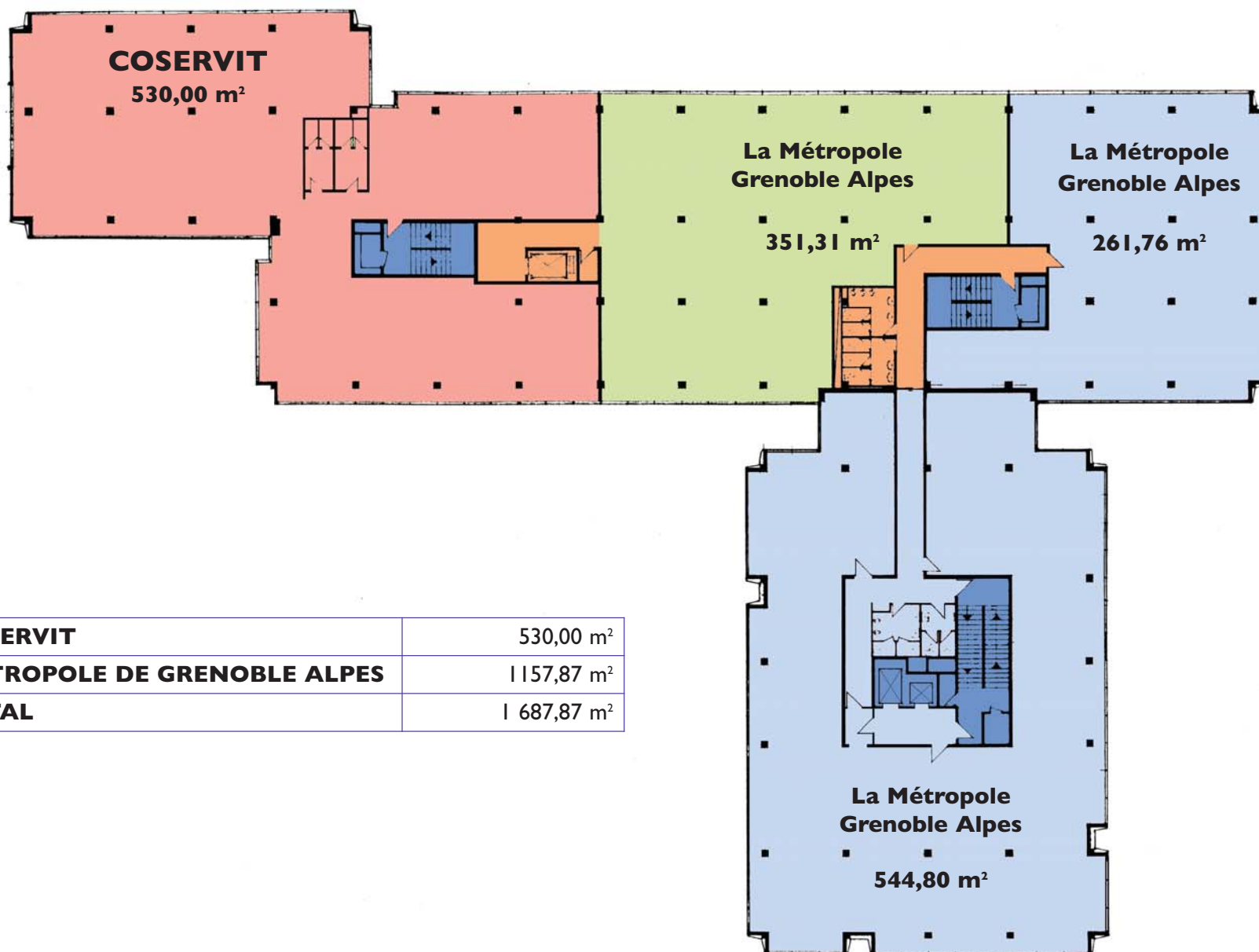


	Bureaux	Sanitaires	Total
Bureau A	244,80	5,91	251,71
Bureau B	83,23	2,30	85,53
Bureau C	459,31	12,80	472,11
Bureau D	120,88	3,40	124,28
Bureau E1	103,00	4,30	159,44
Bureau E2	56,44		
Bureau F	530,00	14,80	544,80
Total	1 593,36	44,51	1 637,87

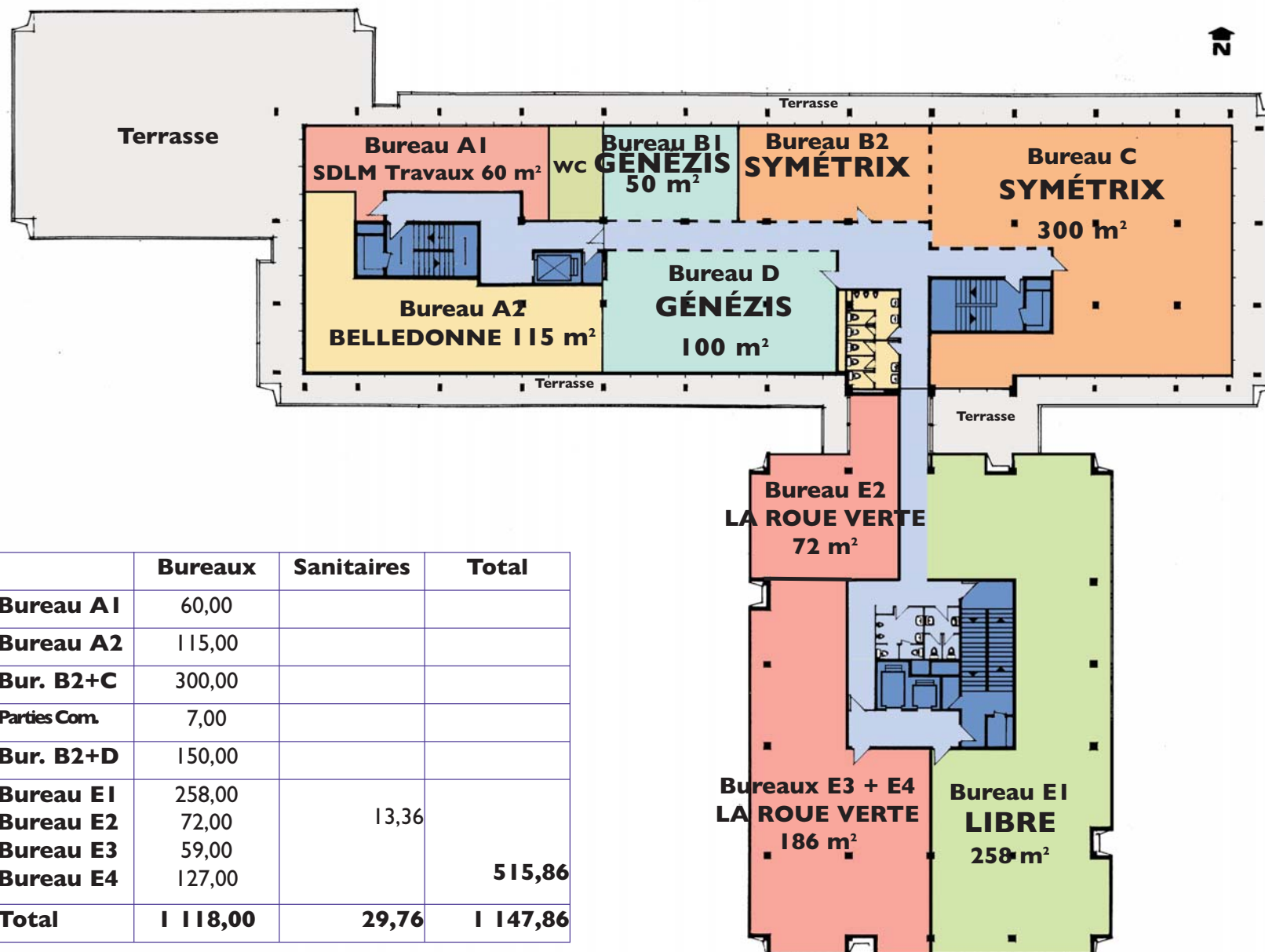


Niveau 2

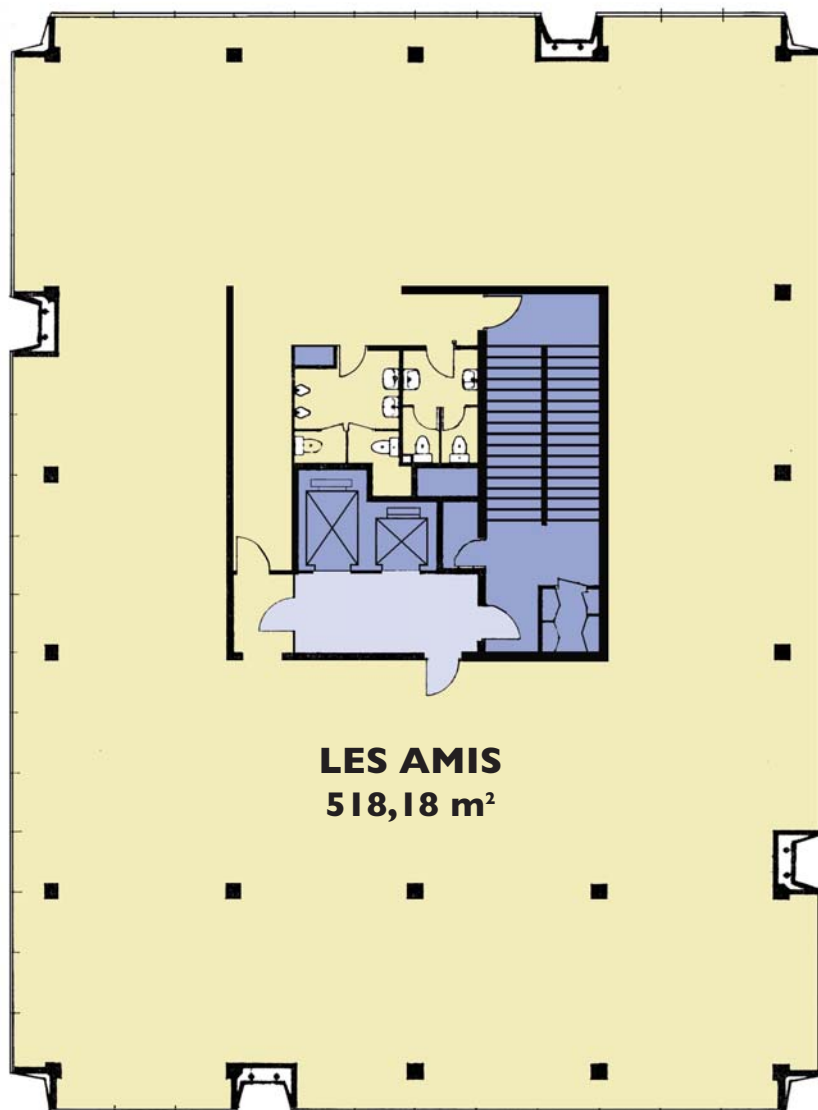
LE TRIDENT



COSERVIT	530,00 m ²
METROPOLE DE GRENOBLE ALPES	1 157,87 m ²
TOTAL	1 687,87 m ²

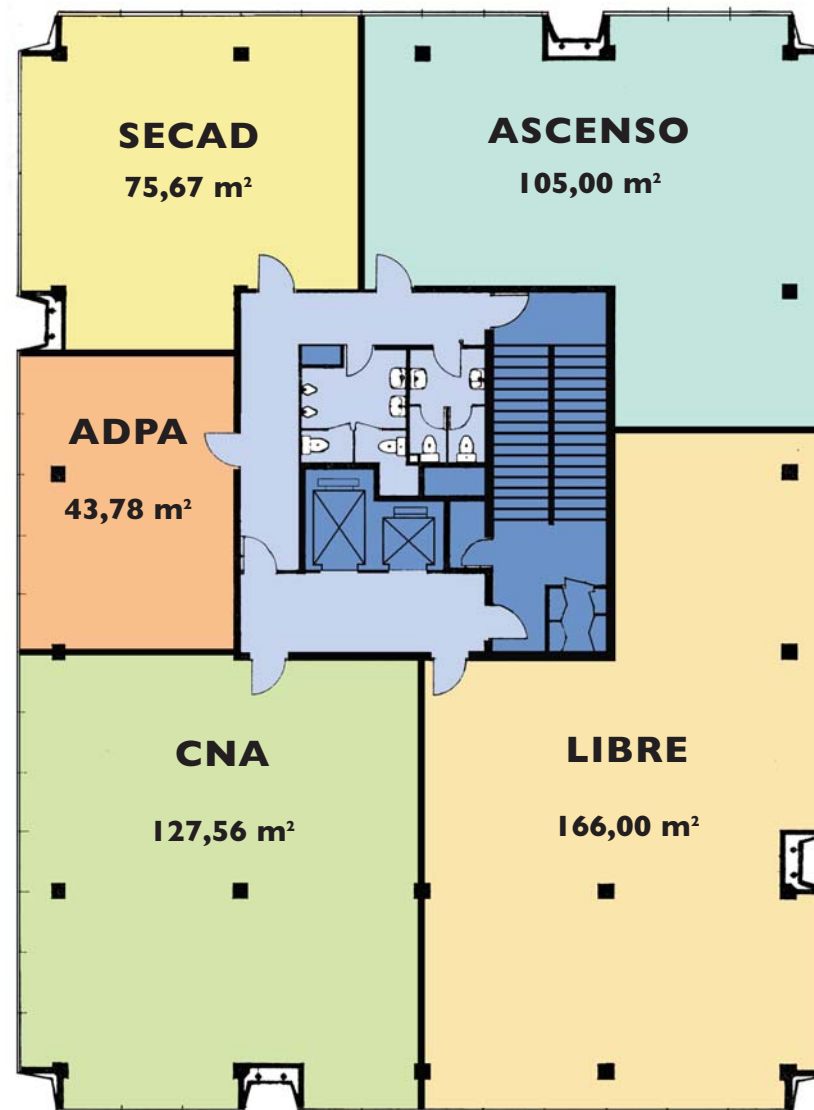


Niveau 4

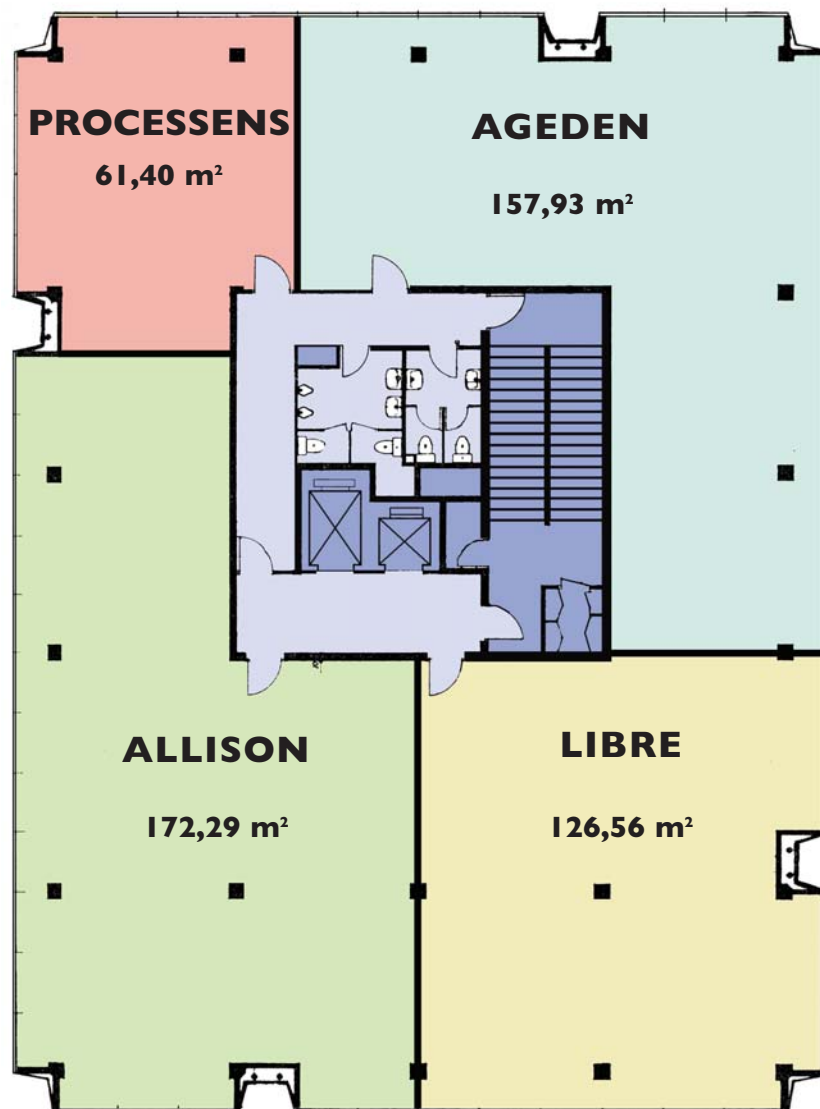


Niveau 5

LE TRIDENT

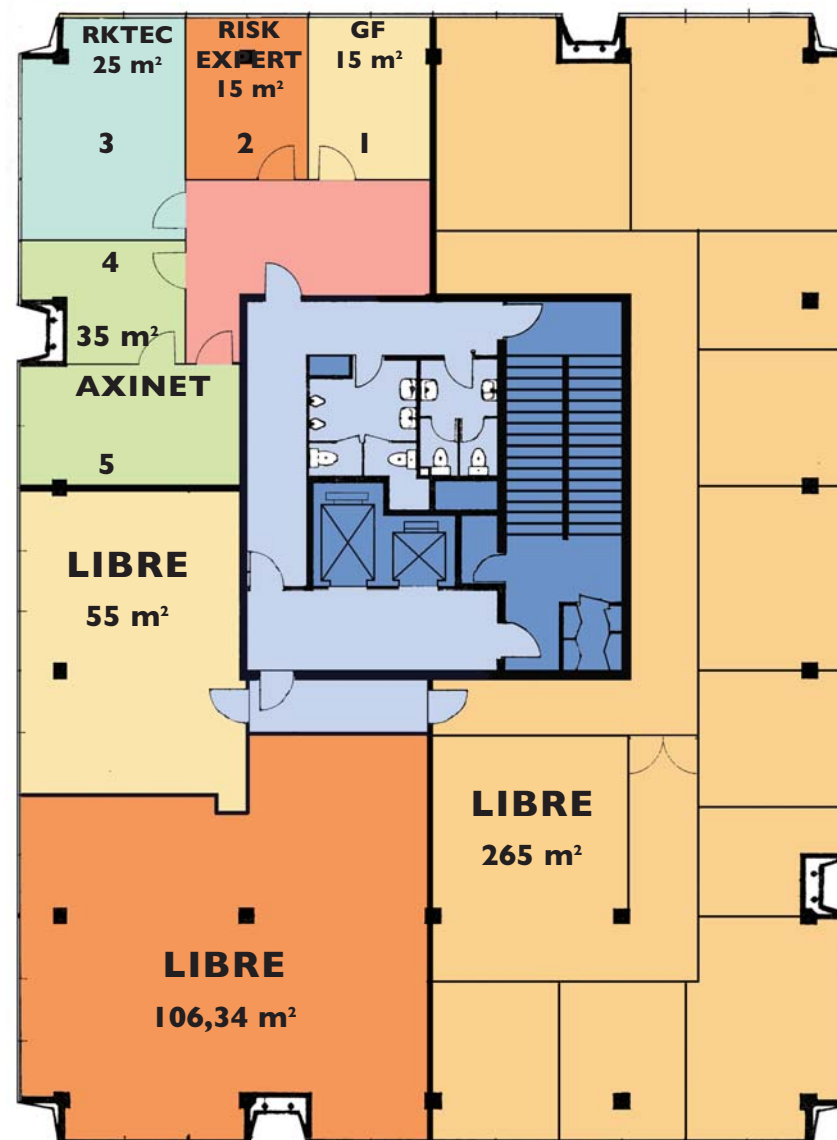


Niveau 6



Niveau 7

LE TRIDENT



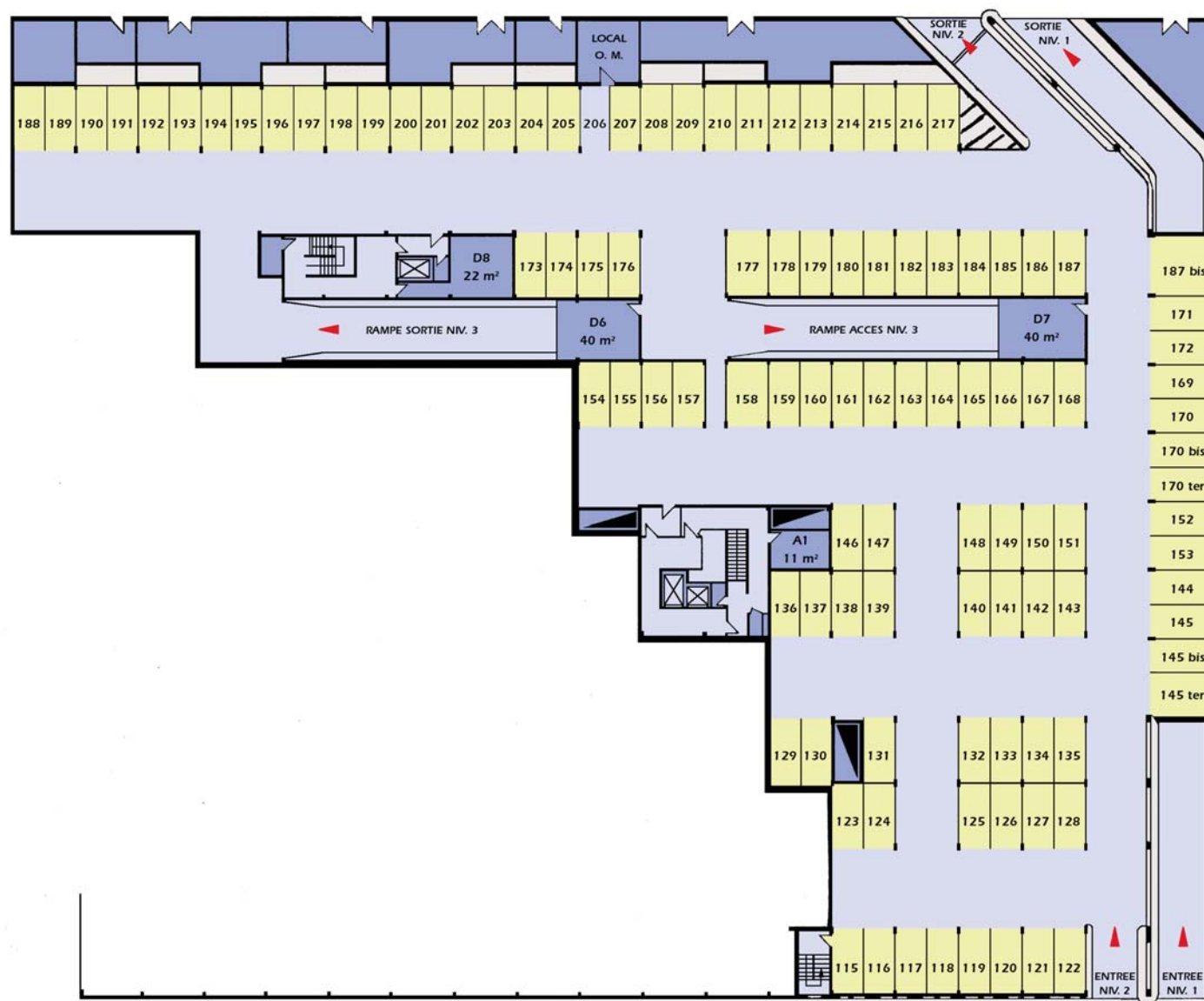
Niveau I - 110 parkings

LE TRIDENT



Niveau 2 - 108 parkings

LE TRIDENT



Niveau 3 - 76 parkings

LE TRIDENT

